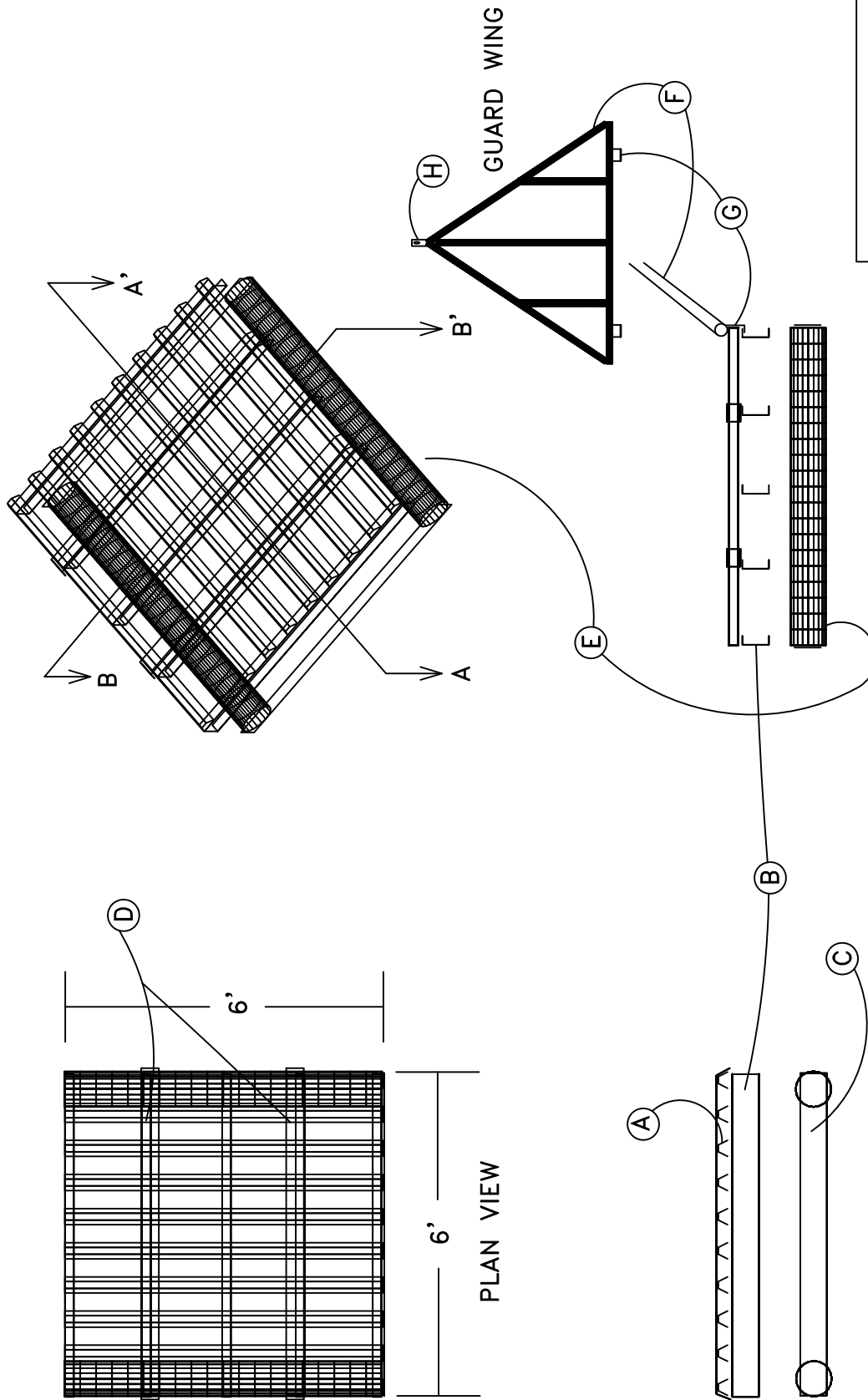


*FIGURE 5-14  
STANDARD TYPE B CATTLEGUARD*



CONNECTION SPECS: 100% WELD LH 7018 CONTINUOUS FEED WIRE.	
HOLES:	

SECTION A - A'

SECTION B - B'

NOTE: WHEN A 12 OR 18 FOOT SECTION IS REQUIRE,  
PART E - 8" STEEL PIPE SHALL BE ONE SOLID PIECE OF PIPE.

*PARK COUNTY  
ROAD & BRIDGE STANDARDS  
STANDARD DRAWINGS*

ISSUED:
REVISED:
DRAWING NO.:
5-14